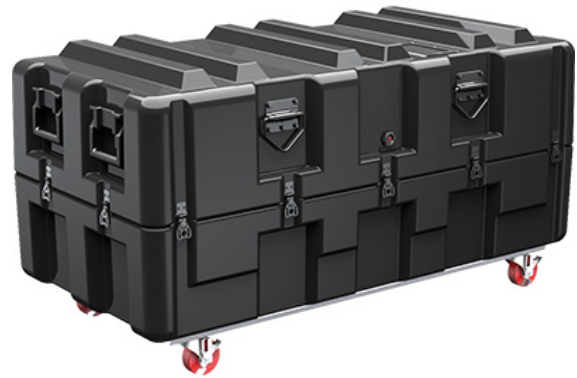


Trusted for over 40 years by the US Military, Single Lid Cases offer 20% more protective material in the edges and corners, where it is needed most, ensuring that valuable equipment is kept safe from any unforeseen elements. Available in several sizes, these cases are completely customizable with a wide range of bolt-on options like document holders, casters, humidity indicators and much more.



- Reinforced corners and edges for additional impact protection
- Recessed hardware for extra protection
- Positive anti-shear locks, which prevent lid separation after impact, and reduce stress on hardware
- Molded-in ribs and corrugations for secure, non-slip stacking, columnar strength, and added protection
- Molded-in, tongue-in-groove gasketed parting lines for splash resistance and tight seals, even after impact
- Patented molded-in metal inserts for catch and hinge attachment points, which provide strength and spread loads to the container
- One-piece construction, molded from lightweight, high-impact polyethylene

DIMENSIONS

Exterior (LxWxD): 53.50 x 26.30 x 23.50"

MATERIALS

Body Material: *RotoMolded Polyethylene*

Latch Material: *Steel (Nickel-black Plated)*

PELICAN HARDIGG/ SINGLE-LID STANDARD COLORS



Grey 133
Fed Std
#26270



Tan 250
Fed Std
#20372



LT Blue 135
Pantone
#292U



White 132
Fed Std
#27925



LT Yellow
136
Pantone
#012U



DK Green
138
Fed Std
#24052



Orange 134
Fed Std
#12197



DK Yellow
131
Fed Std
#23538



Maroon 197
Pantone
#202U



DK Blue 101
Fed Std
#25052



Black 032
Fed Std
#27040



Red 130
Fed Std
#21105



Olive Drab
137
Fed Std
#34096



Purple 129
Pantone
#245U

WEIGHT

Weight: *50.90 lbs (kg)*